

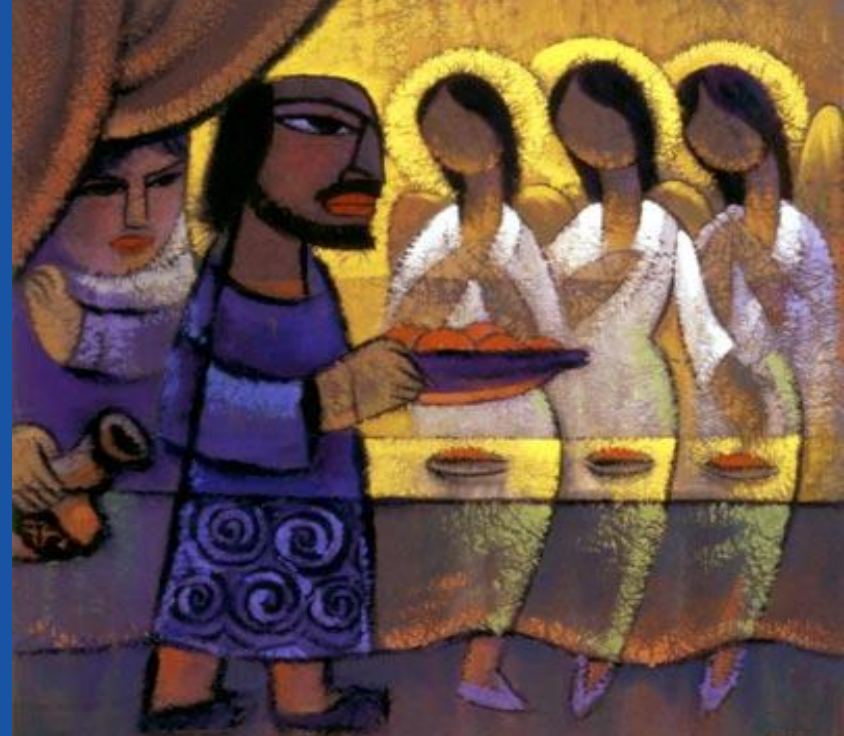
GEN. 18 & 19

YHWH & 2 angels

- What is the nature and essence of God?
- Not until 200 years AFTER Christ, did the Doctrine of the Trinity (3 Persons) appear

- Athanasian Creed:

“....we worship one God in Trinity; ...one PERSON the Father and another the Son, and another the Holy Ghost...”



EARLY CHURCH AND THE SHEMA



➤ Did not think of God being a conglomerate of “3 persons”

➤ NAS Deuteronomy 6:4

"Hear, O Israel! The LORD is our God, the LORD is one!

➤ NAS Mark 12:29

Jesus answered, "The foremost is, 'Hear, O Israel! The Lord our God is one Lord;



THE NAMES OF GOD

- WE MUST RESTORE THE NAMES OF GOD!
- Lord and God are generic terms
- When Lord and God are used, how can we tell if it is “God” or “Jesus” being referred to?
- Hebrew Scriptures show God’s Name as YHWH
- This does NOT translate to “god” or “lord”



99% OF THE TIME OUR BIBLES SAY “GOD” OR “LORD” IT ACTUALLY SAYS Y-H-W-H!

- Adonai is Hebrew for “Lord”
- NOT disputed among Christian or Hebrew scholars
- SHEMA in ORIGINAL Hebrew: BHT Deuteronomy 6:4
*šūma` yisrā`el **yhwh** `élöhê°nû **yhwh** `ehäd*
Hear O Israel, **Yahweh** is our God, **Yahweh** is One

- SHEMA in TRADITIONAL form: BHT Deuteronomy 6:4
*šūma` yisrā`el **ādönäy** `élöhê°nû **ādönäy** `ehäd*
Hear O Israel **the LORD** is our God, **the LORD** is ONE

REINSERTING GOD'S NAME (YHWH) CREATES DOCTRINE PROBLEMS



- *NAS Acts 1:11 and they also said, "Men of Galilee, why do you stand looking into the sky? This Jesus, who has been taken up from you into heaven, will come in just the same way as you have watched Him go into heaven."*
- The manner He went includes:
 - 1) The FORM God/Man Jesus
 - 2) The PLACE Mt. of Olives
 - 3) The WAY Into the sky, clouds



MT. OF OLIVES SPLITTING IS NOT IN THE N.T. IT IS IN THE O.T.

- His return is a fulfillment of Zechariah 14
- Generally assumed that this passage refers to end-times and the coming of the Lord

ZECHARIAH 14 SAYS IT IS Y-H-W-H (YEHOVEH) WHO LANDS ON THE MT. OF OLIVES!!

- We have always just “plugged in” JESUS
- Hebrew says YHWH
- Vs. 9 says “ He is ***ECHAD***”.....***ONE***
- This description is always reserved for the totality of the Godhead...

The one we call “God”



“3 PERSONS” DOCTRINE



- We must re-examine this questionable un-Scriptural construct
- “Left Behind” is a fictional story!
- This is NOT A CHALLENGE to the nature of God as Father, Son, and Holy Spirit
- Separates the Persons
- Separates the Functions
- Logical conclusion of 3 Persons doctrine: when Christ was on earth, God in Heaven was only 2/3 rds. complete!

A MORE SCRIPTURAL MODEL OF GOD

- ATTRIBUTES
- Cannot separate Becky from her attributes
- I CAN speak of the attributes separately
- We cannot remove one attribute from her and allow the rest to remain
- THERE IS NOT A WHOLE BUNCH OF BECKY PERSONS!!

BECKY'S ATTRIBUTES

Wife of Tom

Mother of children

Grandmother

Comforter

Companion

Compassionate

Friend to many



YEHOVEH'S ATTRIBUTES

FATHER

SON

HOLY SPIRIT

FUNCTIONS

FATHER

Grand Author of “the Plan”

HOLY SPIRIT Container and Messenger of “the Plan”

SON

Grand Executor of “the Plan”

FUNCTIONS

SOUL Author of her plans

MIND Intellect, container
and messenger of her
plans

BODY Executes those plans

- **Soul** is the eternal part that connects her to the spiritual
- **Body** is the earthly part that connects her to the physical
- **Mind** connects the two

PRIMARY ATTRIBUTES

Soul

Mind

Body



GOD'S ATTRIBUTES ARE CONTAINED IN HIS "NAMES"

EL mighty

EL SHADDAI all-sufficient

YHWH YIREH provider

YHWH ROPHE healer

YHWH SHALOM our peace

EL ROI he who sees

YHWH TZIDKENU our righteousness

YAH-SHUA God Saves

ATTRIBUTES

GOD

Function of SON
Executor of plans

FATHER , SON ,
HOLY SPIRIT

NAME: Yah-shua
(God - saves)

← SPIRITUAL – HEAVENLY PLANE →

Holy Spirit
→
function

Messenger/
container

Man to execute plan on earth



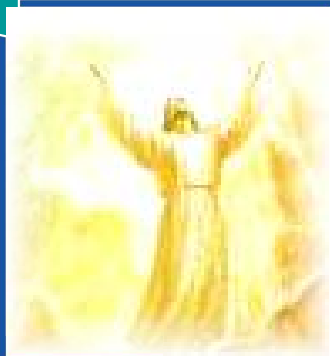
← PHYSICAL – EARTHLY PLANE →

REALITY OF DUALITY

SPIRITUAL – HEAVENLY PLANE

Yahshua

Heavenly body



Believer

Heavenly body



RESURRECTION!

THE
FIRSTFRUITS



FINAL
IN-GATHERING



Yahshua

Earthly body



Believer

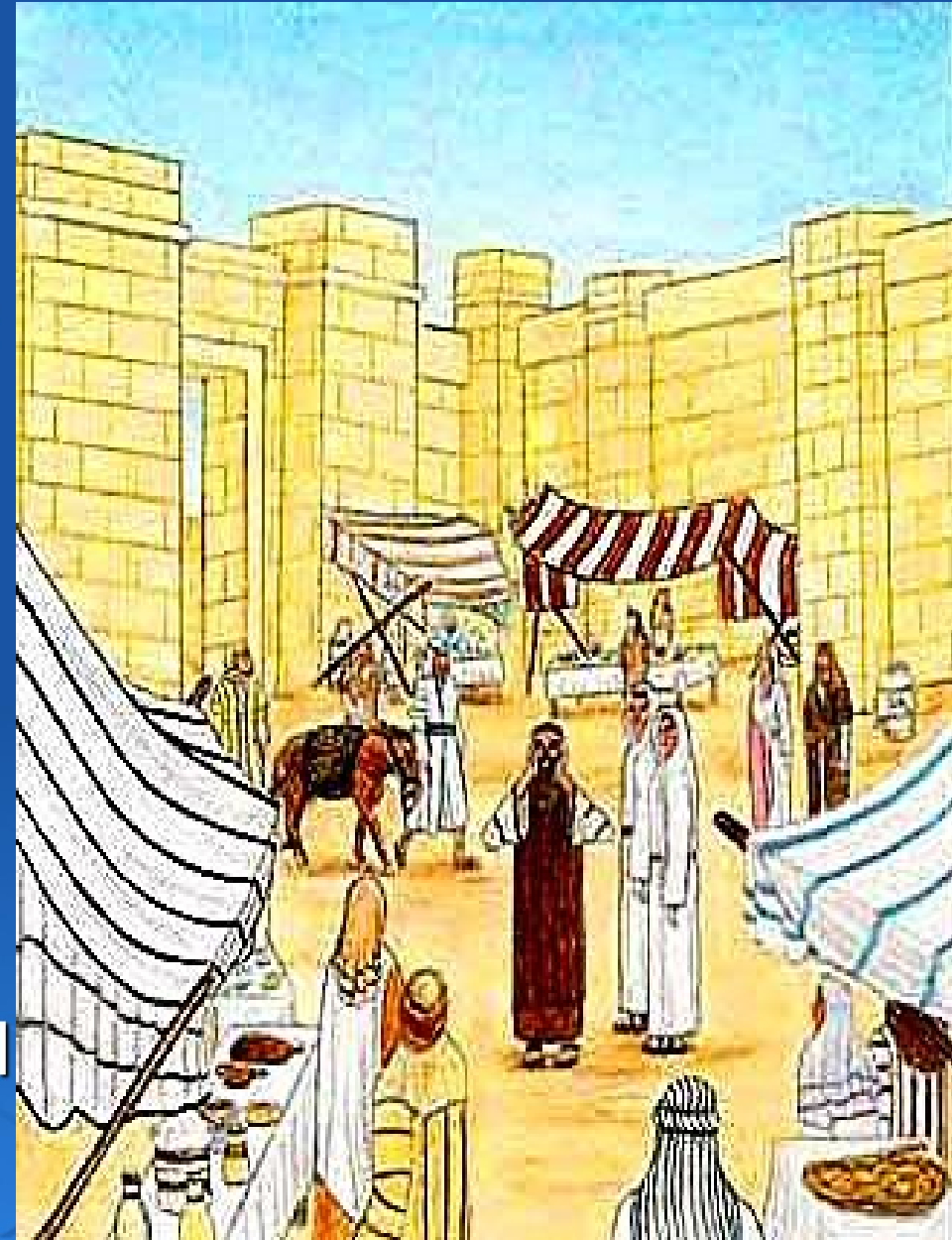
Earthly body



PHYSICAL – EARTHLY PLANE

LOT AT THE CITY GATE

- Usual and customary to show guests great honor
- The city gate was the only way into a walled city
- Gate had towers and guard room
- Gate served as the “Town Square”
- Lot prepared his “guests” Matzah to eat
- Symbolizes a hurried meal



WHAT WAS THE WICKEDNESS OF SODOM?



- The wickedness:
HOMOSEXUALITY
- This sin is so grievous, God was going to eradicate an entire district!
- This is the **ONLY** sin mentioned
- It is our duty as Believers to stand against this terrible sin against YHWH